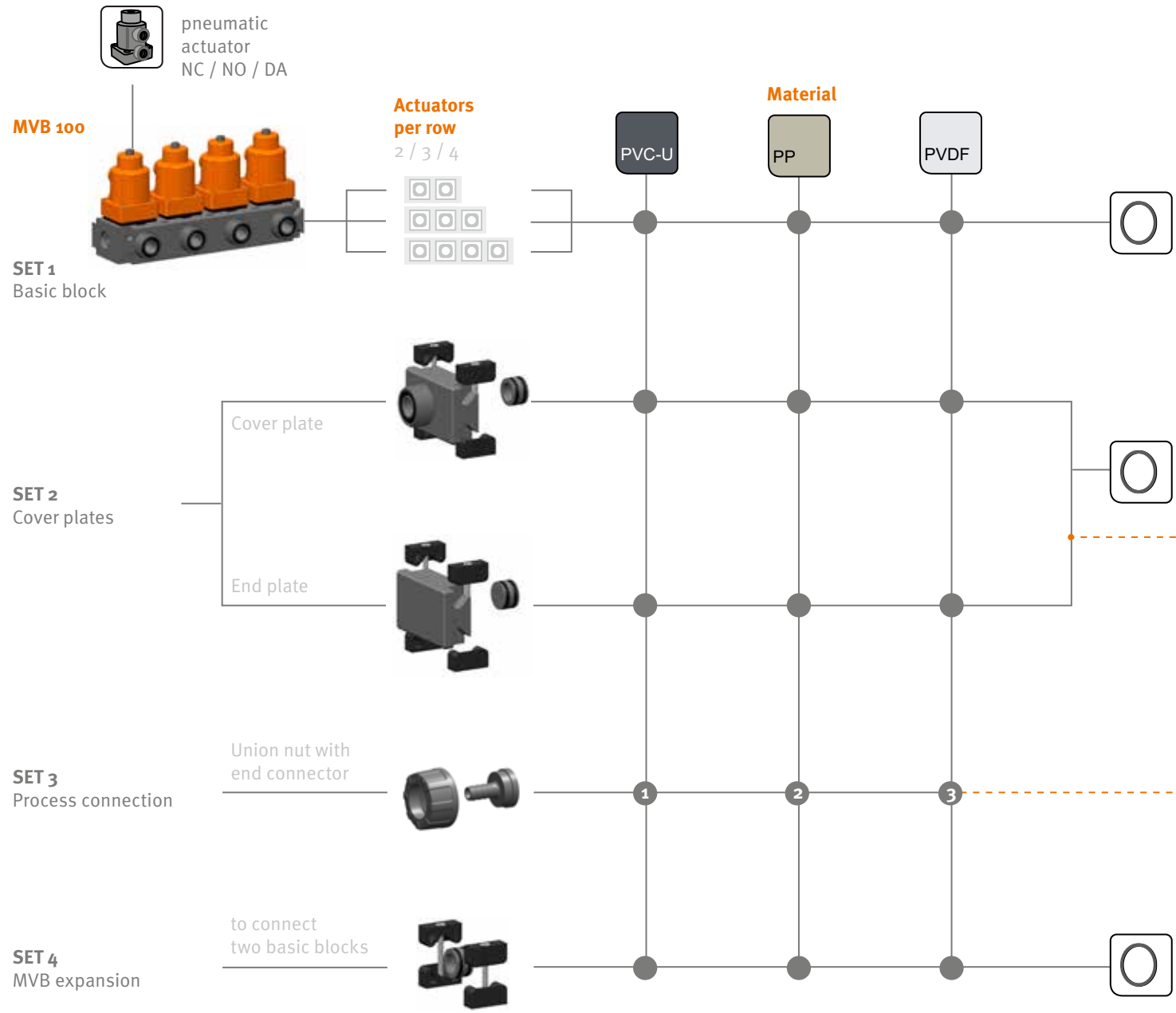


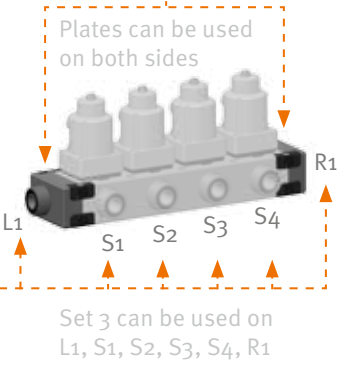
PICTOGRAM



NC = normally closed
NO = normally open
DA = double acting

Diaphragm – Sealing
EPDM – EPDM
FPM – FPM
PTFE – EPDM
PTFE – FPM

Sealing
EPDM
FPM



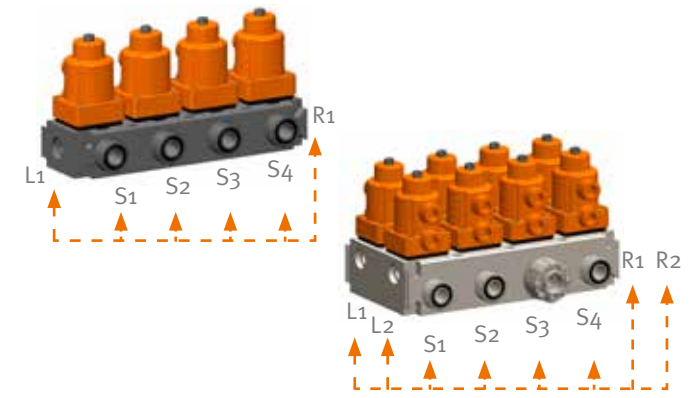
Set 3 can be used on L1, S1, S2, S3, S4, R1

Sealing
EPDM
FPM

Connection material (process connection)

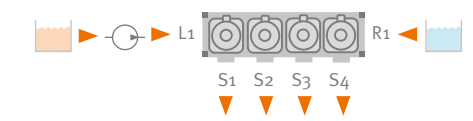
- 1** PVC-U Socket **DIN, ANSI, BS, JIS**
Female thread Rp, NPT
Hose nozzle
10 mm, 13 mm
Blind lid
- 1.4571 Female thread Rp
PE100 Spigot **DIN**
- 2** PP Socket **DIN**
Female thread Rp
Spigot (IR)
Hose nozzle
10 mm, 13 mm
Blind lid
- 3** PVDF Socket **DIN**
Spigot (IR)
Hose nozzle
10 mm, 13 mm
Blind lid

● available
○ not available



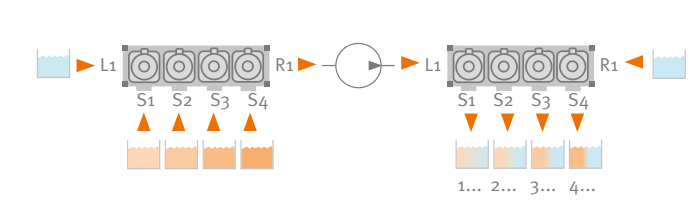
Example 1
Same media, several outlets

Setup: Medium – pump – MVB 100 – H₂O



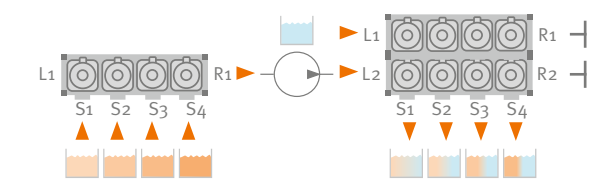
Example 2
variable media with intermediate rinsing

Setup: H₂O – Media – MVB 100 – pump – MVB100 – H₂O



Example 3
Different media with direct rinsing

Setup: Media – MVB 100 – pump – H₂O – MVB 200



MODULAR VALVE BLOCK

MVB 100 | MVB 200



Basic nominal diameters:

DN 8	DN 10	DN 15	DN 20	DN 25	DN 32	DN 40	DN 50	DN 65	DN 80	DN 100	DN 125	DN 150	DN 200	DN 250	DN 300	DN 350	DN 400
------	-------	-------	-------	-------	-------	-------	-------	-------	-------	--------	--------	--------	--------	--------	--------	--------	--------

MODULAR VALVE BLOCKS

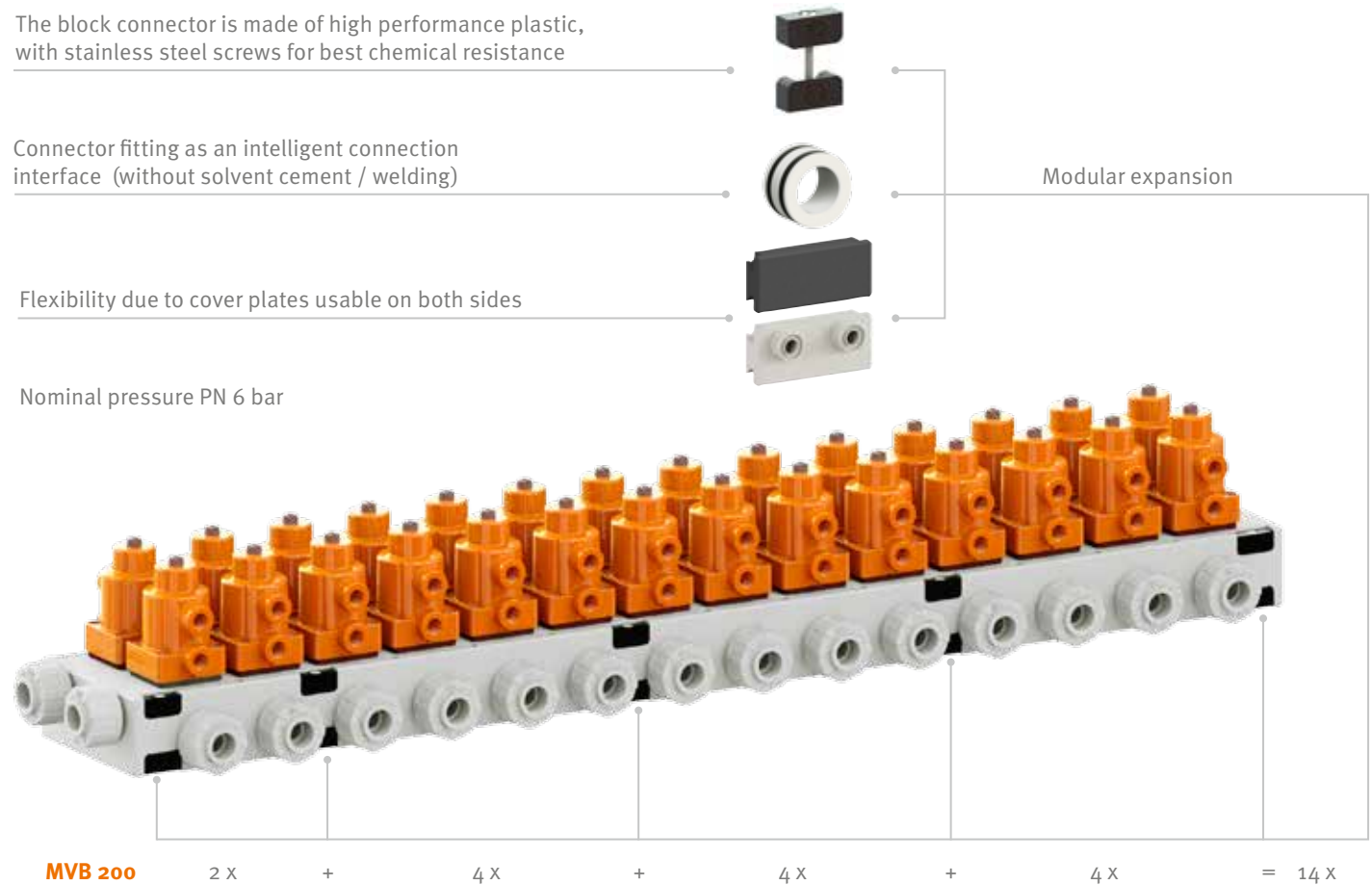


The block connector is made of high performance plastic, with stainless steel screws for best chemical resistance

Connector fitting as an intelligent connection interface (without solvent cement / welding)

Flexibility due to cover plates usable on both sides

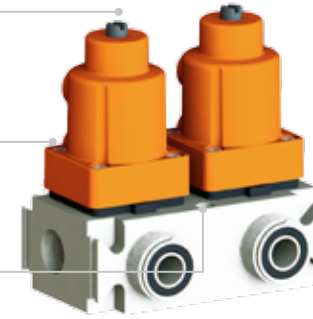
Nominal pressure PN 6 bar



Visual position indicator

Actuator version
NC, NO, DA actuator versions

Fixation hole for pre-wall installation



Characteristics

MVB 100

- Ideal for realising dosing and distribution functions in limited installation spaces
- High economic efficiency due to low space requirement and minimal installation work
- Modular extendible to any number of actuators
- High availability due to standardised components
- Simple and service-friendly structure with a minimum number of connection points
- Long service life of diaphragms and actuators

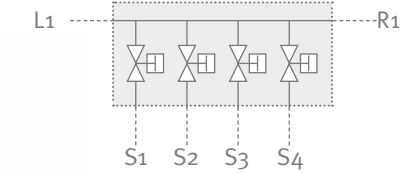
MVB 200

- As MVB 100 with an additional quick-rinsing function by a second row of actuators
- Increased process availability due to the reduction of auxiliary times (rinsing processes)

MVB 100



1 row (4x)



MVB 200



2 rows (4x)

