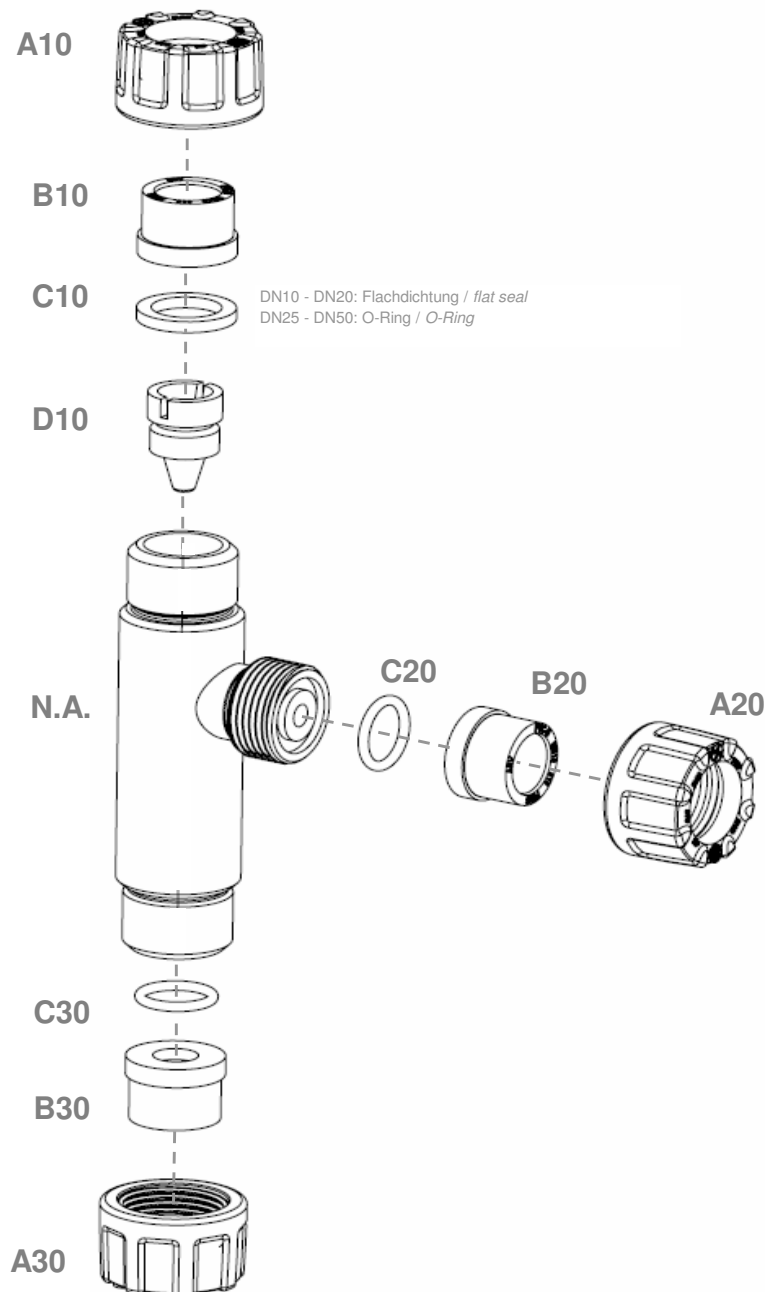



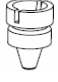


Wasserstrahlpumpe SP 820/ *Water-jet pump 820*

DN10 - DN15 - DN20 - DN25 - DN32 - DN40 - DN50



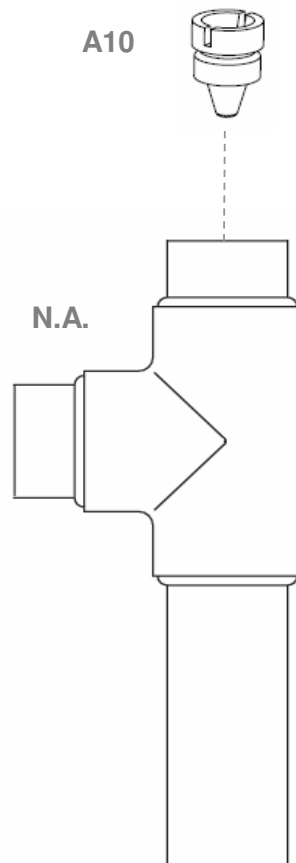
| Teil Item | Abbildung Picture | Bezeichnung Description | Material* Material* | Artikelnr. / Material no. | | | | | | | | | | |
|-------------------|---|--|---|---------------------------------|---|---------------------------------------|--------------------------|--------------------------|----------------|----------------|-----------|-----------|-------|-------|
| | | | | d 16 DN10 | d 20 DN15 | d 25 DN20 | d 32 DN25 | d 40 DN32 | d 50 DN40 | d 63 DN50 | | | | |
| A10 A20 A30 |  | Überwurfmutter Union nut | PVC-U | 533470800 | 533480800 533470800 | 533490800 533480800 | 533500800 | 533510800 | 533520800 | 533530800 | | | | |
| A10 A20 A30 | | | PP | 671180800 | 671190800 671180800 | 671200800 671190800 | 671210800 | 671220800 | 671230800 | 671240800 | | | | |
| A10 A20 A30 | | | PVDF | 1186910800 | 1186920800 1186910800 | 1186930800 1186920800 | 1186940800 | 1186950800 | 1186990800 | 1187000800 | | | | |
| B10 B20 B30 | | |  | Einlegeteil Muffe Socket end | PVC-U | 533110800 | 533120800 533110800 | 533130800 533120800 | 533140800 | 533150800 | 533160800 | 533170800 | | |
| B10 B20 B30 | | | | | PP | 566190800 | 649840800 566190800 | 649850800 649840800 | 649860800 | 649870800 | 649880800 | 649890800 | | |
| B10 B20 B30 | | | | | PVDF | 1102320800 | 1102330800 1102320800 | 1102340800 1102330800 | 433280800 | 433300800 | 433360800 | 433370800 | | |
| C10 C20 C30 | | | | |  | O-Ring, FD- Ring O-ring, Flat seal | EPDM | 53894 53927 | 53895 53927 | 53896 53927 | 53930 | 53931 | 53932 | 53933 |
| C10 C20 C30 | | | | | | | FPM | 42656 53936 | 42655 53936 | 42654 53936 | 53939 | 53940 | 53941 | 53942 |
| | | | | | | | | 53936 53937 | 53937 | 53938 | | | | |
| D10 |  | Düse mit Bohrung** Nozzle with bore** | PVC-U | 119989 | 119989 | 119992 | 119995 | 119998 | 120001 | 120004 | | | | |
| | | | PP | 119990 | 119990 | 119993 | 119996 | 119999 | 120002 | 120005 | | | | |
| | | | PVDF | 119991 | 119991 | 119994 | 119997 | 120000 | 120003 | 120006 | | | | |
| N.A | - | nicht Verfügbar not available | - | - | - | - | - | - | - | - | | | | |


* medienberührt / medium contacted

** 1 mm Zentrierbohrung / 1 mm center hole

Wasserstrahlpumpe SP 820/ Water-jet pump 820

DN65 - DN80



| Teil Item | Abbildung Picture | Bezeichnung Description | Material* Material* | Artikelnr. / Material no. | |
|--------------|---|--|------------------------|---------------------------|--------------|
| | | | | d75 DN 65 | d90 DN 80 |
| A10 |  | Düse mit Bohrung** Nozzle with bore** | PVC-U | 111374 | 111375 |
| | | | PP | 111573 | 111574 |
| | | | PVDF | 111582 | 111583 |
| N.A | - | nicht Verfügbar not available | - | - | - |

* medienberührt / medium contacted

** 1 mm Zentrierbohrung / 1 mm center hole