

# PVC-U DUMMY FLANGE

Nominal size DN 10–200

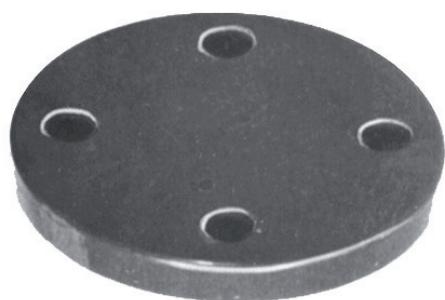
Nominal size 3/8"–4"

Pressure PN 6–10 bar

## Features

- according to DIN EN 1092 (DIN 2501), hole circle PN 10

[www.stuebbe.com/en/products-systems/accessory/](http://www.stuebbe.com/en/products-systems/accessory/)



### Use

- Industrial plastic pipe construction

### Application

- for shutting off pipeline systems

### Application conditions

- For neutral and aggressive ambient influences, provided that the selected flange material is resistant at the operating and ambient temperature according to the Stübbe resistance guide.

### Stübbe resistance guide

[www.stuebbe.com/pdf\\_resistance/300051.pdf](http://www.stuebbe.com/pdf_resistance/300051.pdf)

### Nominal pressure (H<sub>2</sub>O, 20 °C)

- PN 6–10 bar

### Medium temperature

- See graphics "Pressure/temperature diagram"

### Operating pressure

- See graphics "Pressure/temperature diagram"

### Operating temperature

- 0–60 °C

### Material

- PVC-U: polyvinyl chloride, unplasticized

### Size

- DN 10–200

### Dimensions

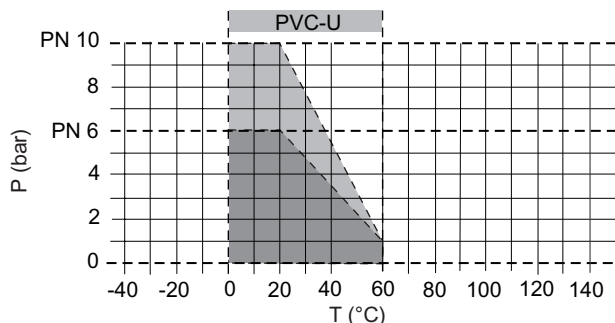
- Connection dimensions according to DIN EN1092, DIN2501, hole circle PN 10

### Color

- gray RAL 7011

**PVC-U Dummy flange**

**Pressure/temperature diagram**



Description	
<b>P</b>	Operating pressure
<b>T</b>	Temperature

The pressure/temperature limits of the materials are valid for the stated nominal pressures and a service life of 25 years.

These values are guide values for flow medium types which do not negatively impact the physical and chemical characteristics of the valve material. It may be necessary to take diminution factors into consideration.

**Flange tightening torques (Nm)**

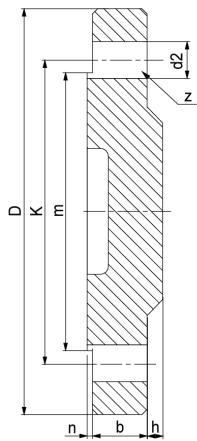
d (mm)	DN (mm)	Flat ring up to max. 10 bar	Profile seal up to max. 16 bar	O ring up to max. 16 bar
16	10	5	5	5
20	15	10	10	10
25	20	12	12	12
32	25	15	12	12
40	32	20	15	15
50	40	25	15	15
63	50	30	20	20
75	65	35	20	20
90	80	35	20	20
110	100	35	20	20
125	100	35	20	20
140	125	45	30	25
160	150	55	35	30
180	150	55	35	30
200	200	65	40	35
225	200	65	40	35

Torques based roughly on DVS 2210-1 for use of torque-controlled tools. The leak tightness of the flange connections is guaranteed, if the above-mentioned torques are used.

**Attention**

The intended use includes adhering to specified limit values for pressure, temperature and screw tightening torques, as well as checking the resistance.

### Connection



d (mm)	16	20	25	32	40	50	63	75	90	110	140	160	225
DN (mm)	10	15	20	25	32	40	50	65	80	100	125	150	200
DN (inch)	3/8	1/2	3/4	1	1 1/4	1 1/2	2	2 1/2	3	4	5	6	8
PN (bar)	10	10	10	10	10	10	10	10	10	10	6	6	6
b	12.5	13	14	15	17	17	18.5	18.5	20	20	26	28	30
d2	14	14	14	14	18	18	18	18	18	18	18	22	22
D	90	95	105	115	140	150	165	185	200	220	250	285	340
h	0.1	0.1	3	4	4	4	5	5	6	7	5	5	1
K	60	65	75	85	100	110	125	145	160	180	210	240	295
m	37.5	42	-	-	-	-	-	130	146	-	-	-	-
n	1.5	1.5	-	-	-	-	-	2	2	-	-	-	-
z	4	4	4	4	4	4	4	4	8	8	8	8	8

all dimensions in mm / \* dimensions in inch