

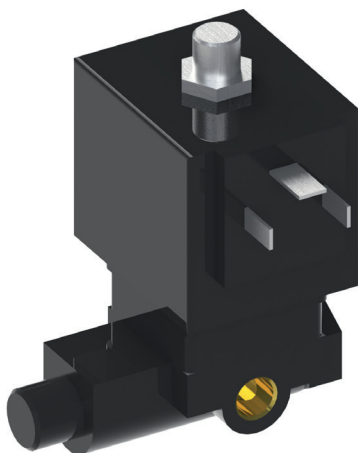
# PILOT SOLENOID VALVE 6014

Pressure PN 0–10 bar

## Features

- direct action
- efficient, simple installation
- available as standard with manual emergency control

[www.asv-stuebbe.com/produkte/armaturen](http://www.asv-stuebbe.com/produkte/armaturen)



## Pilot solenoid valve 6014

### Application

- for control of pneumatic drives

### Function

- closed when de-energized (NC)

### Flow medium

- Compressed air lubricated and not lubricated, nitrogen, instrument air

### ASV-Stübbe resistance guide

- [www.asv-stuebbe.de/pdf\\_resistance/300051.pdf](http://www.asv-stuebbe.de/pdf_resistance/300051.pdf)

### Medium temperature

- -10–100 °C

### Operating pressure

- PN 0–10 bar

### Housing

- PA, brass

### Sealing element

- FPM

### Ambient temperature

- -10–55 °C (max.)

### Connection

- Supply connection: Female threaded socket G 1/8"
- Working connection 6014 PA: Banjo bolt G 1/4"
- Working connection 6014 MS: Female threaded socket G 1/8"

### Connector plug

- According to DIN 43650, shape A

### Voltage

- 230 V AC, 50/60 Hz
- 24 V DC

### Voltage tolerance

- +/-10%

### Coil capacity

- 8 Watt

### Manipulating time

- Opening: 18 ms
- Closing: 22 ms

### Duty cycle

- 100 %

### Type of protection

- IP 65 with mounted connector plug

### Accessories

Double nipple: 1/8" / 1/4"

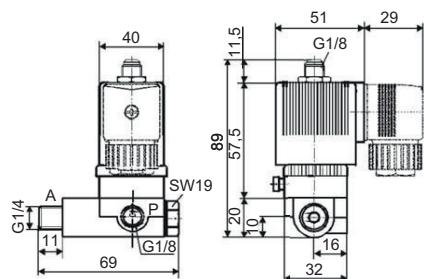
- Ident No.: 118654

Connector DIN 43650:

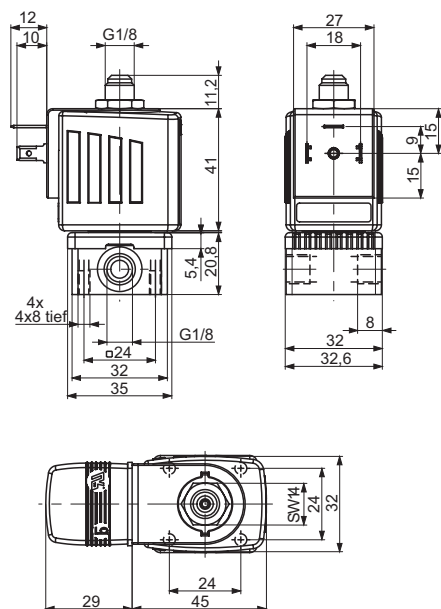
- Ident No.: 135532 / 0–250 V AC/DC / without LED
- Ident No.: 112400 / 12–24 V AC/DC / with LED
- Ident No.: 137378 / 200–240 V AC/DC / with LED

# Pilot solenoid valve 6014

## PA



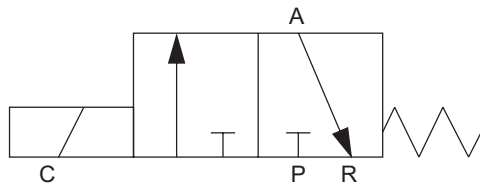
## Brass



## Pilot solenoid valve 6014

### Circuit diagram

3/2-way solenoid valves for NC/NO actuators



	Description
A	Working connection
P	Compressed air connection
R	Return