

# PP STEEL FLANGE

**Nominal size DN 15–400**

**Nominal size 1/2"–16"**

**Pressure PN 10–16 bar**

## Features

- according to DIN EN 1092 (DIN 2501), hole circle PN 10
- corrosion-resistant thanks to the thick-walled seamlessly coated PP glass fiber casing
- solid steel core
- permanent operating temperature up to 80 °C
- for flange adaptors and welding stubs

[www.stuebbe.com/en/products-systems/accessory/](http://www.stuebbe.com/en/products-systems/accessory/)



### Use

- Industrial plastic pipe construction

### Application

- for connecting thermoplastic pipes

### Application conditions

- For neutral and aggressive ambient influences, provided that the selected materials are resistant at the operating and ambient temperature according to the Stübbe resistance guide.

### Stübbe resistance guide

[www.stuebbe.com/pdf\\_resistance/300051.pdf](http://www.stuebbe.com/pdf_resistance/300051.pdf)

### Nominal pressure (H<sub>2</sub>O, 20 °C)

- PN 10–16 bar

### Operating temperature

- -30–80 °C

For temperatures below 0°C please specify the precise operating conditions of the application!

### Material

- Ideal material combination: elastic PP with chemically bonded glass fiber content for the shell; hard steel core with high yield point

### Size

- DN 15–400

### Dimensions

- Connection dimensions, excluding internal diameter, according to DIN EN1092, DIN2501, hole circle PN 10

### Connection

- Shape A: to fit flange adaptors according to DIN 8063 (PVC), and/or analogous to DIN 16962/3 (PP, PE, PVDF or ABS) with internal diameter ID = d<sub>1</sub>
- Shape B: to fit welding stubs according to DIN 16962/3 (PP, PE or PVDF) with internal diameter ID = d<sub>3</sub>

### Color

- black, RAL 9011

### Guide values for screw tightening torques [Nm]

d (mm)	DN (mm)	Flat ring up to max. 10 bar	Profile seal up to max. 16 bar	O ring up to max. 16 bar
20	15	10	10	10
25	20	12	12	12
32	25	15	12	12
40	32	20	15	15
50	40	25	15	15
63	50	30	20	20
75	65	35	20	20
90	80	35	20	20
110	100	35	20	20
125	100	35	20	20
140	125	45	30	25
160	150	55	35	30
180	150	55	35	30
200	200	65	40	35
225	200	65	40	35
250	250	70	50	40
280	250	70	50	40
315	300	90	60	45
355	350	90	70	50
400	400	100	80	60

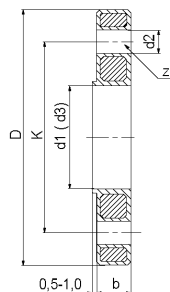
Torques based roughly on DVS 2210-1 for use of torque-controlled tools. The leak tightness of the flange connections is guaranteed, if the above-mentioned torques are used.

### Note

The intended use includes adhering to specified limit values for pressure, temperature and screw tightening torques, as well as checking the resistance.

**PP steel flange**

**Connection**



d1: für Bundbuchsen / for flange adaptors  
d3: für Vorschweißbünde / for welding necks

d (mm)	20	25	32	40	50	63	75	90	110	125	140	160	180	200	225	250	280	315	355	400
DN (mm)	15	20	25	32	40	50	65	80	100	100	125	150	150	200	200	250	250	300	350	400
DN (inch)	1/2	3/4	1	1 1/4	1 1/2	2	2 1/2	3	4	4	5	6	6	8	8	10	10	12	14	16
PN (bar)	16	16	16	16	16	16	16	16	16	16	16	16	16	10*	10*	10*	10*	10*	10*	10*
b	13	14.5	15.5	17.5	17.5	19	19	21	22	22	26	27	27	28	28	31	31	34	39	42
d1	28	34	42	51	62	78	92	110	133	-	167	190	-	-	250	-	-	-	-	-
d2	14	14	14	18	18	18	18	18	18	18	18	22	22	22	22	22	22	22	22	26
d3	28	34	42	51	62	78	92	108	128	135	158	178	188	235	238	288	294	338	376	430
D	95	106	116	141	151	166	186	201	221	221	251	286	286	341	341	406	406	460	520	580
K	65	75	85	100	110	125	145	160	180	180	210	240	240	295	295	350	350	400	460	515
z	4	4	4	4	4	4	4	8	8	8	8	8	8	8	8	12	12	12	16	16
Type	A+B	A+B	A+B	A+B	A+B	A+B	A+B	A+B	A+B	B	A+B	A+B	B	B	A+B	B	B	B	B	B

Shape A: for flange adaptors / shape B: for welding stubs

\* An operating pressure of up to 16 bar can be applied to flange connections from DN 200.  
Note: Adhere to the permissible operating pressure for the seals used.