

GFR FLANGE

Nominal size DN 10–200

Nominal size 3/8"–8"

Pressure PN 10 bar

Features

- according to DIN EN 1092 (DIN 2501), hole circle PN 10
- low weight
- permanent operating temperature up to 90 °C
- for flange adaptors and welding stubs

www.stuebbe.com/en/products-systems/accessory/



Use

- Industrial plastic pipe construction

Application

- for connecting thermoplastic pipes
- ideal high-strength flanges for all thermoplastic pipe connections

Application conditions

- For neutral and aggressive ambient influences, provided that the selected flange material is resistant at the operating and ambient temperature according to the Stübbe resistance guide.

Stübbe resistance guide

www.stuebbe.com/pdf_resistance/300051.pdf

Nominal pressure (H₂O, 20 °C)

- PN 10 bar

Operating temperature

- -30–90 °C

For temperatures below 0°C please specify the precise operating conditions of the application!

Material

- high-quality polyester with a chemically bonded glass fibre content

Size

- DN 10–200

Dimensions

- Connection dimensions, excluding internal diameter, according to DIN EN1092, DIN2501, hole circle PN 10

Connection

- Shape A: to fit flange adaptors according to DIN 8063 (PVC), and/or analogous to DIN 16962/3 (PP, PE, PVDF or ABS) with internal diameter ID = d₁
- Shape B: to fit welding stubs according to DIN 16962/3 (PP, PE or PVDF) with internal diameter ID = d₃

Color

- black, RAL 9011

Flange tightening torques (Nm)

d (mm)	DN (mm)	Flat ring up to max. 10 bar	Profile seal up to max. 16 bar	O ring up to max. 16 bar
16	10	5	5	5
20	15	10	10	10
25	20	12	12	12
32	25	15	12	12
40	32	20	15	15
50	40	25	15	15
63	50	30	20	20
75	65	35	20	20
90	80	35	20	20
110	100	35	20	20
125	100	35	20	20
140	125	45	30	25
160	150	55	35	30
180	150	55	35	30
200	200	65	40	35
225	200	65	40	35

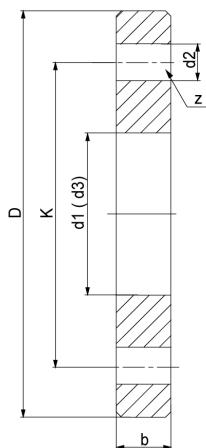
Torques based roughly on DVS 2210-1 for use of torque-controlled tools. The leak tightness of the flange connections is guaranteed, if the above-mentioned torques are used.

Attention

The intended use includes adhering to specified limit values for pressure, temperature and screw tightening torques, as well as checking the resistance.

GFR flange

Connection



11: für Bundbuchsen / for flange adaptors
13: für Vorschweißbunde / for welding necks

d (mm)	16	20	25	32	40	50	63	75	90	110	125	140	160	180	200	225
DN (mm)	10	15	20	25	32	40	50	65	80	100	100	125	150	150	200	200
DN (inch)	3/8	1/2	3/4	1	1 1/4	1 1/2	2	2 1/2	3	4	4	5	6	6	8	8
PN (bar)	10	10	10	10	10	10	10	10	10	10	10	10	10	10	10	10
b	12	12	14	15	17	17	18	18	20	20	20	26	28	28	30	30
d1	23	28	34	42	51	62	78	92	110	133	-	167	190	-	-	250
d2	14	14	14	14	18	18	18	18	18	18	18	18	23	23	23	23
d3	-	28	34	42	51	62	78	92	108	128	135	158	178	188	235	238
D	90	95	105	115	140	150	165	185	200	220	220	250	285	285	340	340
K	60	65	75	85	100	110	125	145	160	180	180	210	240	240	295	295
z	4	4	4	4	4	4	4	4	8	8	8	8	8	8	8	8
Type	A	A+B	A+B	A+B	A+B	A+B	A+B	A+B	A+B	A+B	B	A+B	A+B	B	B	A+B

all dimensions in mm / * dimensions in inch