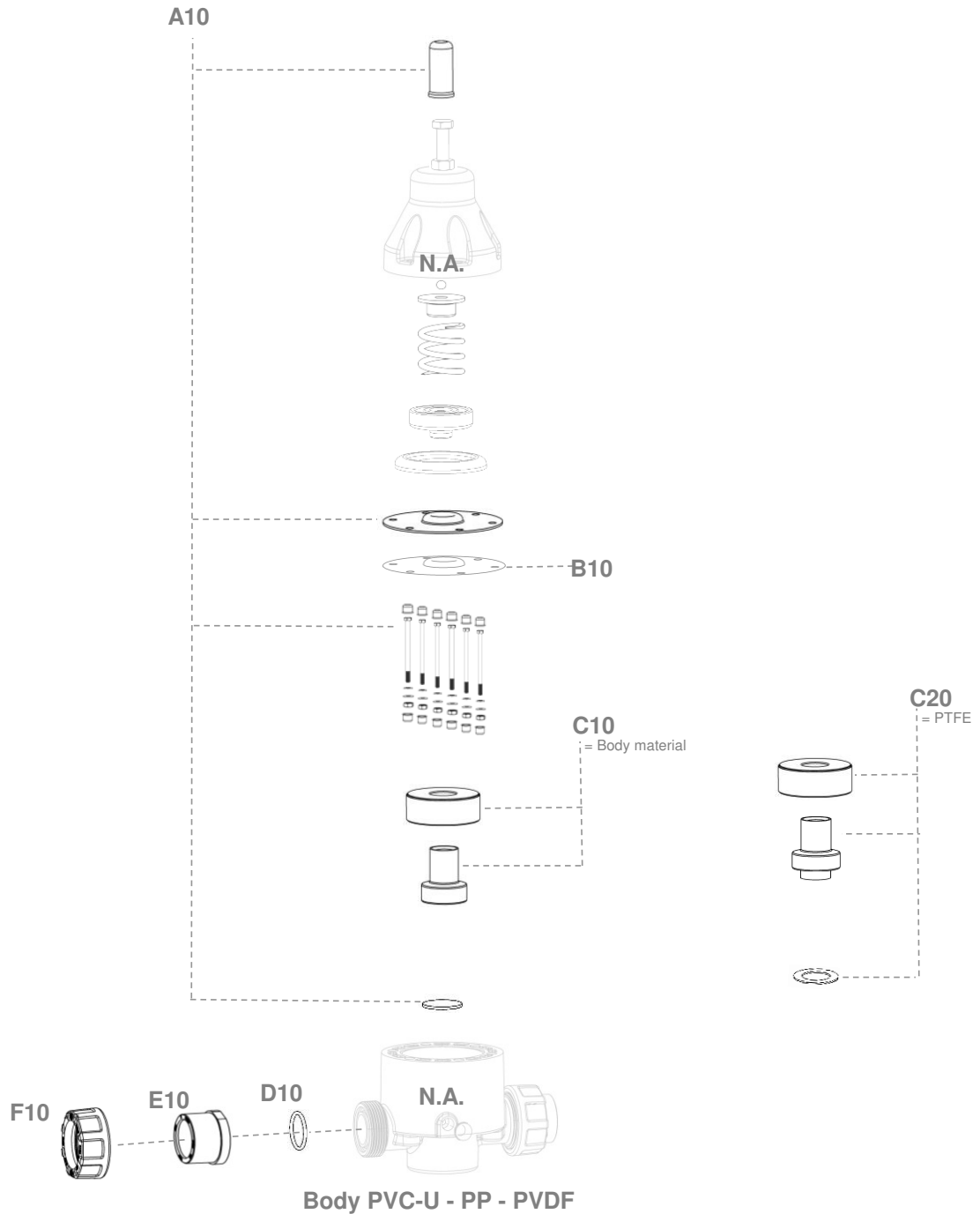



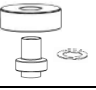





Druckhalteventil DHV 712-R / Pressure relief valve DHV 712-R

DN10 - DN15 - DN20 - DN25 - DN32 - DN40 - DN50



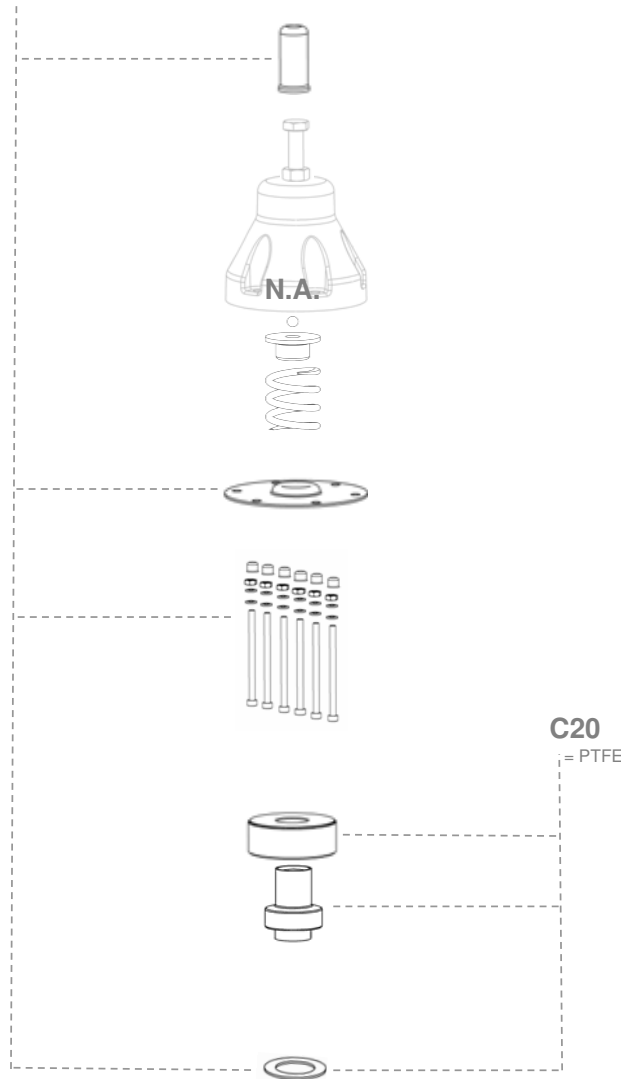
Body PVC-U - PP - PVDF / Piston = Body material				Artikelnr. / Material no.							
Teil Item	Abbildung Picture	Bezeichnung Description	Material* Material*	d 16	d 20	d 25	d 32	d 40	d 50	d 63	
				DN10	DN15	DN 20	DN 25	DN 32	DN 40	DN 50	
A10		Membran Set incl. Schrauben, Kappen, FD- Ring <i>Diaphragm Set incl. bolts, caps, flat seal</i>	EPDM - PVC-U	145127			145129		145133		
			EPDM - PP	145127			145129		145131		
			EPDM - PVDF	145127			145129		145131		
			FPM - PVC-U	145128			145130		145134		
			FPM - PP	145128			145130		145132		
			FPM - PVDF	145128			145130		145132		
B10		Diffusionsschutzfolie <i>Diffusionstop foil</i>	ETCFE	142541			142848		142542		
C10		Kolben Set incl. Trennscheibe <i>Piston set incl. separating disc</i>	PVC-U	145141			145144		145147		
			PP	145142			145145		145148		
			PVDF	145143			145146		145149		
C20		Kolben Set incl. Trenn- scheibe und FD-Ring <i>Piston set incl. separating disc, flat seal</i>	PTFE	145150			145151		145152		
D10		O-Ring <i>O-ring</i>	EPDM	53927	53928	53929	53930	53931	53932	53933	
			FPM	53936	53937	53938	53939	53940	53941	53942	
E10		Einlegeteil Muffe <i>Socket end</i>	PVC-U	533110800	533120800	533130800	533140800	533150800	533160800	533170800	
			PP	566190800	649840800	649850800	649860800	649870800	649880800	649890800	
			PVDF	1102320800	1102330800	1102340800	433280800	433300800	433360800	433370800	
F10		Überwurfmutter <i>Union nut</i>	PVC-U	533470800	533480800	533490800	533500800	533510800	533520800	533530800	
			PP	671180800	671190800	671200800	671210800	671220800	671230800	671240800	
			PVDF	1186910800	1186920800	1186930800	1186940800	1186950800	1186990800	1187000800	
N.A	-	Nicht Verfügbar <i>not available</i>	-	-	-	-	-	-	-		

* medienberührt / medium contacted


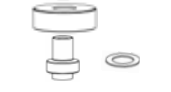

Druckhalteventil DHV 712-R / Pressure relief valve DHV 712-R

DN10 - DN15 - DN20 - DN25 - DN32 - DN40 - DN50

A10



Body PTFE + C

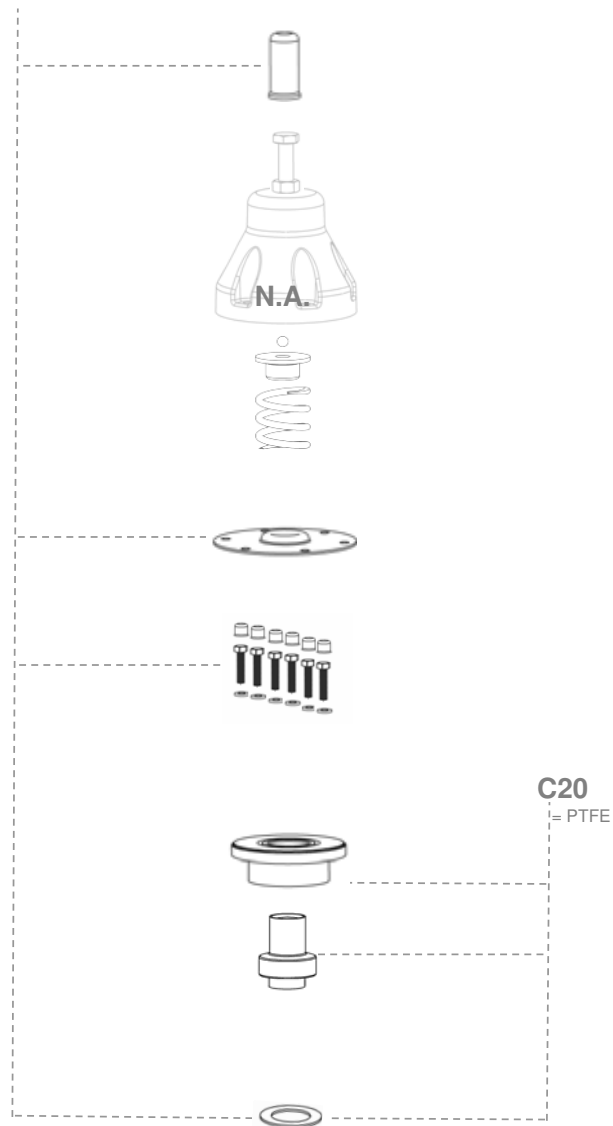
Body PTFE / Piston = PTFE				Artikelnr. / Material no.						
Teil Item	Abbildung Picture	Bezeichnung Description	Material* Material*	d 16	d 20	d 25	d 32	d 40	d 50	d 63
				DN10	DN15	DN 20	DN 25	DN 32	DN 40	DN 50
A10		Membran Set incl. Schrauben, Kappen, FD- Ring <i>Diaphragm Set incl. bolts, caps, flat seal</i>	PTFE	145135		145136		145137		
B10		Kolben Set incl. Trenn- scheibe und FD-Ring <i>Piston set incl. separating disc, flat seal</i>	PTFE	145150		145151		145152		
D10		FD-Ring <i>Flat Seal</i>	PTFE	99058	99059	99060	99061	99062	99063	126955
N.A	-	Nicht Verfügbar <i>not available</i>	-	-	-	-	-	-	-	-

* medienberührt / medium contacted

Druckhalteventil DHV 712-R / Pressure relief valve DHV 712-R

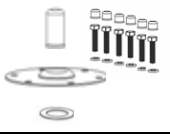
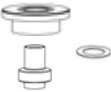

DN10 - DN15 - DN20 - DN25 - DN32 - DN40 - DN50

A10



Body 1.4571

Body 1.4571 / Piston = PTFE

Teil Item	Abbildung Picture	Bezeichnung Description	Material* Material*	Artikelnr. / Material no.						
				d 16	d 20	d 25	d 32	d 40	d 50	d 63
				DN10	DN15	DN 20	DN 25	DN 32	DN 40	DN 50
A10		Membran Set incl. Schrauben, Kappen, FD- Ring <i>Diaphragm Set incl. bolts, caps, flat seal</i>	PTFE	145138		145139		145140		
B10		Kolben Set incl. Trennscheibe <i>Piston set incl. separating disc</i>	PTFE	145153		145154		145155		
D10		FD-Ring Flat Seal	PTFE	99058	99059	99060	99061	99062	99063	126955
N.A	-	Nicht Verfügbar <i>not available</i>	-	-	-	-	-	-	-	-

* medienberührt / medium contacted